

Bridge Inspection Report

07069
US 49/SEC-8/L6.96
over
I-40 SEC 43



Inspection Date:

Inspected By:

Inspection Type(s):

Inspector:

Structure Number: 07069

Inspection Date:

Facility Carried: US 49/SEC-8/L6.96

Bridge Inspection Report

National Bridge Inventory

IDENTIFICATION		INSPECTIONS	
(1) STATE CODE	056 - Arkansas	(90) INSPECTION DATE	10/24/2017
(8) STRUCTURE NUMBER	07069	(91) DESIGNATED INSPECTION FREQUENCY	24
(5) INV. ROUTE (ON/UNDER)	1 2 1 49 0	(92) CRITICAL FEATURE INSPECTION	(93) CFI DATE
(2) HIGHWAY AGENCY 01	(3) COUNTY CODE 095	A. FRACTURE CRITICAL DETAIL	N
(4) PLACE CODE	08200	B. UNDERWATER INSPECTION	N
(6) FEATURES INTERSECTED	I-40 SEC 43	C. OTHER SPECIAL	N
(7) FACILITY CARRIED	US 49/SEC-8/L6.96		
(9) LOCATION	1.1MI N JCT US 70 & 49		
(11) MILEPOINT 6.960	(12) BASE HIGHWAY NETWORK 1		
(13A) LRS INVENTORY ROUTE	0000049080	(13B) SUBROUTE NUMBER	00
(16) LATITUDE	34.909264	(17) LONGITUDE	-91.196693
(98A) BORDER BRIDGE CODE			
PERCENT RESPONSIBILITY	(99) BORDER BRIDGE STRUCT		
STRUCTURE TYPE AND MATERIAL		CONDITION	
(43) STRUCTURE TYPE, MAIN		(58) DECK	7
A) KIND OF MATERIAL/DESIGN: 4 - Steel continuous		(59) SUPERSTRUCTURE	9
B) TYPE OF DESIGN/CONSTR: 02 - Stringer/Multi-beam or Girder		(60) SUBSTRUCTURE	8
(44) STRUCTURE TYPE, APPROACH SPANS		(61) CHANNEL & CHANNEL PROTECTION	N
A) KIND OF MATERIAL/DESIGN: 0 - Other		(62) CULVERT	N
B) TYPE OF DESIGN/CONSTR: 00 - Other			
(45) NUMBER OF SPANS IN MAIN	2	(46) NUMBER OF APPROACH	0
(107) DECK STRUCTURE TYPE	1	(108A) WEARING SURFACE	1
(108B) DECK MEMBRANE	0	(108C) DECK PROTECTION	1
AGE OF SERVICE		LOAD RATING AND POSTING	
(27) YEAR BUILT	2009	(106) YEAR RECONSTRUCTED	0000
(42) TYPE OF SERVICE	ON 1 UNDER 1	(31) DESIGN LOAD	5
(28) LANES	ON 04 UNDER 06	(63) METHOD USED TO DETERMINE OPERATING RATING	1
(29) AVERAGE DAILY TRAFFIC	6700	(64) OPERATING RATING	60.0
(30) YEAR OF AVERAGE DAILY TRAFFIC	2014	(65) METHOD USED TO DETERMINE INVENTORY RATING	1
(109) AVERAGE DAILY TRUCK TRAFFIC	14	(66) INVENTORY RATING	36.0
		(70) BRIDGE POSTING	5
		(41) STRUCTURE OPEN/POSTED/CLOSED	A
GEOMETRIC DATA		APPRAISAL	
(48) LENGTH OF MAX SPAN (ft.)	140	(49) STRUCTURE LENGTH (ft.)	282.2
(50) CURB/SIDEWALK WIDTHS (ft.)	LEFT 6 RIGHT 6	(67) STRUCTURAL EVALUATION	8
(51) BRDG RDWY WIDTH CURB-TO-CURB (ft.)	49.9	(68) DECK GEOMETRY	3
(52) DECK WIDTH, OUT-TO-OUT (ft.)	65.2	(69) UNDERCLEARANCES, VERTICAL & HORIZONTAL	6
(32) APPROACH ROADWAY WIDTH (ft.)	49.9	(71) WATERWAY ADEQUACY	N
(33) BRIDGE MEDIAN	0	(72) APPROACH ROADWAY ALIGNMENT	8
(34) SKEW (DEG.)	19	(36) TRAFFIC SAFETY FEATURE	
(35) STRUCTURE FLARED	0	36A) BRIDGE RAILINGS:	1
(10) INV RTE, MIN VERT CLEAR (ft.)	99.99	36B) TRANSITIONS:	N
(47) TOTAL HORIZONTAL CLEARANCE (ft.)	65.3	36C) APPROACH GUARDRAIL:	N
(53) VERTICAL CLEARANCE OVER BRIDGE ROADWAY (ft.)	99.99	36D) APPROACH GUARDRAIL ENDS:	N
(54) VERTICAL UNDER CLEARANCE (ft.)	H 16.5	(113) SCOUR CRITICAL BRIDGES	N
(55) LATERAL UNDER CLEARANCE RIGHT (ft.)	H 41.5	SUFFICIENCY RATING	2
(56) MIN LATERAL UNDER CLEARANCE (ft.)	7.7	STATUS	78.6
PROPOSED IMPROVEMENTS		CLASSIFICATION	
(75A) TYPE OF WORK PROPOSED	(75B) WORK DONE BY	(112) NBIS BRIDGE LENGTH	Y
(76) LENGTH OF STRUCTURE IMPROVEMENT (ft.)	0	(104) HIGHWAY SYSTEM OF THE INVENTORY ROUTE	1
(94) BRIDGE IMPROVEMENT COST (\$)	0	(26) FUNCTIONAL CLASSIFICATION OF INVENTORY ROUTE	02
(95) ROADWAY IMPROVEMENT COST (\$)	0	(100) STRAHNET HIGHWAY DESIGNATION	0
(96) TOTAL PROJECT COST	0	(101) PARALLEL STRUCTURE DESIGNATION	N
(97) YEAR OF IMPROVEMENT COST ESTIMATE		(102) DIRECTION OF TRAFFIC	2
(114) FUTURE ADT	8372	(103) TEMP STRUCTURE	
(115) YEAR OF FUTURE ADT	2028	(105) FEDERAL LANDS HIGHWAYS	0
		(110) DESIGNATED NATIONAL NETWORK	1
		(20) TOLL	3
		(21) MAINTENANCE RESPONSIBILITY	01
		(37) HISTORICAL	4
		NAVIGATION DATA	
		(38) NAVIGATION CONTROL	N
		(111) PIER OR ABUTMENT PROTECTION	1
		(39) NAV VERT CLEARANCE (ft.)	0
		(116) MIN NAVIGATION VERT CLEARANCE, VERT LIFT BRIDGE (ft.)	0
		(40) NAV HORIZONTAL CLEARANCE (ft.)	0

Inspector:

Structure Number: 07069

Inspection Date:

Facility Carried: US 49/SEC-8/L6.96

Bridge Inspection Report

National Bridge Inventory

UNDER RECORD A

IDENTIFICATION

(1) STATE CODE	056 - Arkansas	(7) FACILITY CARRIED	US 49-SEC-8
(3) COUNTY CODE	095	(8) STRUCTURE NUMBER	07069
(4) PLACE CODE	08200	(9) LOCATION	1.1MI N JCT US 70 & 49
(5) INV. ROUTE (ON/UNDER)	A 1 1 40 2	(11) MILEPOINT	215.740 (12) BASE HIGHWAY NETWORK 1
(6) FEATURES INTERSECTED	I-40 SEC 43	(13A) LRS INVENTORY ROUTE	0000040430 (13B) SUBROUTE NUMBER 00
		(16) LATITUDE	34. (17) LONGITUDE -91.1966666666667
			9083333333333

STRUCTURE TYPE AND MATERIAL

(43) STRUCTURE TYPE, MAIN A) KIND OF MATERIAL/DESIGN: 4 - Steel continuous
 B) TYPE OF DESIGN/CONSTR: 02 - Stringer/Multi-beam or Girder

AGE OF SERVICE

(19) BYPASS DETOUR LENGTH	4	(30) YEAR OF AVERAGE DAILY TRAFFIC	2014
(27) YEAR BUILT	2009	(42) TYPE OF SERVICE	ON 1 UNDER 1
(28) LANES	ON 04 UNDER 03	(109) AVERAGE DAILY TRUCK TRAFFIC	1
(29) AVERAGE DAILY TRAFFIC	15500		

GEOMETRIC DATA

(10) INV RTE, MIN VERT CLEARANCE	16.89	(48) LENGTH OF MAXIMUM SPAN	140 (49) STRUCTURE LENGTH 282.2
(47) TOTAL HORIZONTAL CLEARANCE	91.3		

CLASSIFICATION

(20) TOLL	3	(102) DIRECTION OF TRAFFIC	1
(26) FUNCTIONAL CLASSIFICATION OF INVENTORY ROUTE	01	(103) TEMP STRUCTURE	
(100) STRAHNET HIGHWAY DESIGNATION	1	(104) HIGHWAY SYSTEM OF THE INVENTORY ROUTE	1
(101) PARALLEL STRUCTURE DESIGNATION	N	(110) DESIGNATED NATIONAL NETWORK	1

UNDER RECORD B

IDENTIFICATION

(1) STATE CODE	056 - Arkansas	(7) FACILITY CARRIED	US 49-SEC-8
(3) COUNTY CODE	095	(8) STRUCTURE NUMBER	07069
(4) PLACE CODE	08200	(9) LOCATION	1.1MI N JCT US 70 & 49
(5) INV. ROUTE (ON/UNDER)	B 1 1 40 4	(11) MILEPOINT	215.740 (12) BASE HIGHWAY NETWORK 1
(6) FEATURES INTERSECTED	I-40 SEC 43	(13A) LRS INVENTORY ROUTE	0000040430 (13B) SUBROUTE NUMBER 00
		(16) LATITUDE	34. (17) LONGITUDE -91.1966666666667
			9083333333333

STRUCTURE TYPE AND MATERIAL

(43) STRUCTURE TYPE, MAIN A) KIND OF MATERIAL/DESIGN: 4 - Steel continuous
 B) TYPE OF DESIGN/CONSTR: 02 - Stringer/Multi-beam or Girder

AGE OF SERVICE

(19) BYPASS DETOUR LENGTH	4	(30) YEAR OF AVERAGE DAILY TRAFFIC	2014
(27) YEAR BUILT	2009	(42) TYPE OF SERVICE	ON 1 UNDER 1
(28) LANES	ON 04 UNDER 03	(109) AVERAGE DAILY TRUCK TRAFFIC	1
(29) AVERAGE DAILY TRAFFIC	15500		

GEOMETRIC DATA

(10) INV RTE, MIN VERT CLEARANCE	17.14	(48) LENGTH OF MAXIMUM SPAN	140 (49) STRUCTURE LENGTH 282.2
(47) TOTAL HORIZONTAL CLEARANCE	92.0		

CLASSIFICATION

(20) TOLL	3	(102) DIRECTION OF TRAFFIC	1
(26) FUNCTIONAL CLASSIFICATION OF INVENTORY ROUTE	01	(103) TEMP STRUCTURE	
(100) STRAHNET HIGHWAY DESIGNATION	1	(104) HIGHWAY SYSTEM OF THE INVENTORY ROUTE	1
(101) PARALLEL STRUCTURE DESIGNATION	N	(110) DESIGNATED NATIONAL NETWORK	1

Inspector:

Structure Number: 07069

Inspection Date:

Facility Carried: US 49/SEC-8/L6.96

Bridge Inspection Report

Element Inspection

	Environment	Total Quantity	Units	Condition State 1	Condition State 2	Condition State 3	Condition State 4
12 - Reinforced Concrete Deck	1- Ben.	18394	sq. ft.	13659	4720	15	0
	Each span has unsealed longitudinal cracks with various spacing. Each span has unsealed transverse cracks spaced 4'. Soffit overhangs have a few hairline cracks with some of them with light and heavy efflorescence.						
1120 - Efflorescence/Rust Staining		35			20	15	
1130 - Cracking (RC and Other)		4700			4700		
107 - Steel Open Girder/Beam	1- Ben.	2240	ft.	2240			
	Diaphragms span #2 last 6 of them on right side are welded instead of bolted between girders #4,5.						
515 - Steel Protective Coating		29667	sq. ft.	29667			
205 - Reinforced Concrete Column	1- Ben.	4	each	4			
215 - Reinforced Concrete Abutment	1- Ben.	208	ft.	173	35		
	Abutment back walls have vertical cracks spaced 6' apart.						
234 - Reinforced Concrete Pier Cap	1- Ben.	66	ft.	66			
301 - Pourable Joint Seal	1- Ben.	130	ft.	130			
	Joints have a small amount of debris in them.						
310 - Elastomeric Bearing	1- Ben.	24	each	24			
321 - Reinforced Concrete Approach Slab	1- Ben.	3363	sq. ft.	1570	1121	672	0
	Each approach slab has several open and sealed cracks up to 1/16" wide.						
1130 - Cracking (RC and Other)		1793			1121	672	
331 - Reinforced Concrete Bridge Railing	1- Ben.	565	ft.	424	141	0	0
	Concrete bridge rails have open vertical cracks spaced 4'.						
1130 - Cracking (RC and Other)		141			141		

Inspector:

Structure Number: 07069

Inspection Date:

Facility Carried: US 49/SEC-8/L6.96

Bridge Inspection Report

Maintenance Needs

Date Reported: 10/24/2017

Priority: D - Routine

Work Code: N/A

Deficiency Description:

Abutment #2 right, abutment #1 left sidewalks have settled 1" at bridge end.

Work Description:

Date Repairs Completed:

Maintenance Comments:

Stage: Open



PHOTO 1 Description Abutment #2 right sidewalk has settled 1" at bridge end.

Inspector:

Structure Number: 07069

Inspection Date:

Facility Carried: US 49/SEC-8/L6.96

Bridge Inspection Report

Maintenance Needs

Date Reported: 10/24/2017

Priority: D - Routine

Work Code: N/A

Deficiency Description:

Abutment #1 concrete slope on left side has vines growing on it.

Work Description:

Date Repairs Completed:

Maintenance Comments:

Stage: Open



PHOTO 1 Description Abutment #1 concrete slope on left side has vines growing on it.

Inspector:

Structure Number: 07069

Inspection Date:

Facility Carried: US 49/SEC-8/L6.96

Bridge Inspection Report

Maintenance Needs

Date Reported: 10/24/2017

Priority: C - Important

Work Code: N/A

Deficiency Description:

Each approach slab has several open and sealed cracks up to 1/16" wide.

Work Description:

Date Repairs Completed:

Maintenance Comments:

Stage: Assigned



PHOTO 1 Description Typical longitudinal cracks abutment #2 approach slab spaced 6'+-

Stage: Assigned

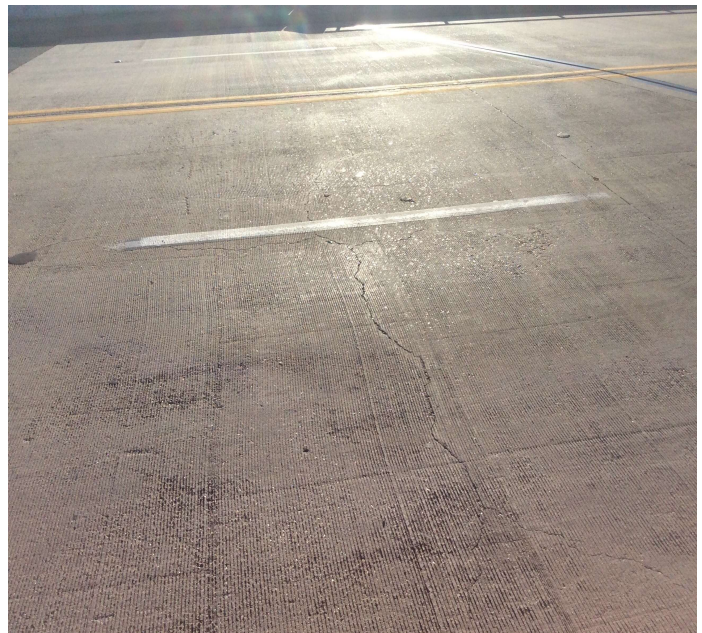


PHOTO 2 Description Typical approach slab cracks.

Inspector:

Structure Number: 07069

Inspection Date:

Facility Carried: US 49/SEC-8/L6.96

Bridge Inspection Report

Maintenance Needs

Date Reported: 10/24/2017

Priority: C - Important

Work Code: N/A

Deficiency Description:

Each span has unsealed longitudinal cracks with various spacing.
Each span has unsealed transverse cracks spaced 4'.

Work Description:

Date Repairs Completed:

Maintenance Comments:

Stage: Assigned

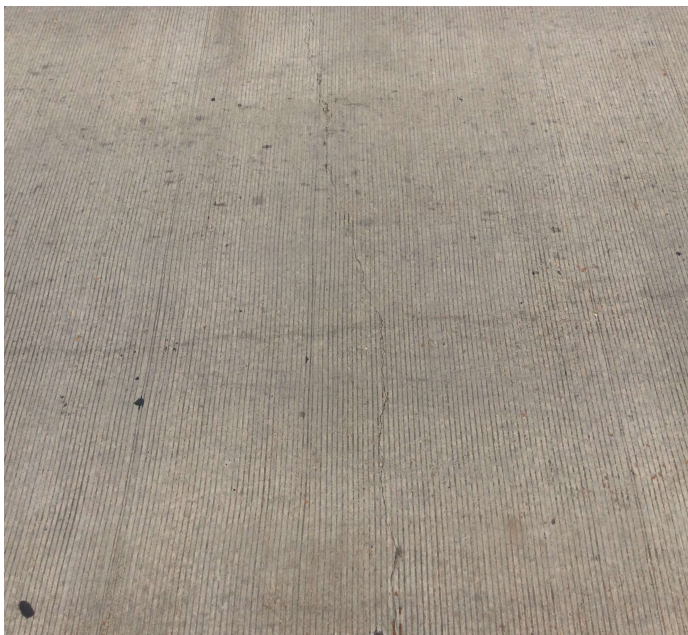


PHOTO 1 Description Typical transverse deck cracks spaced 4' +- all spans.

Stage: Assigned

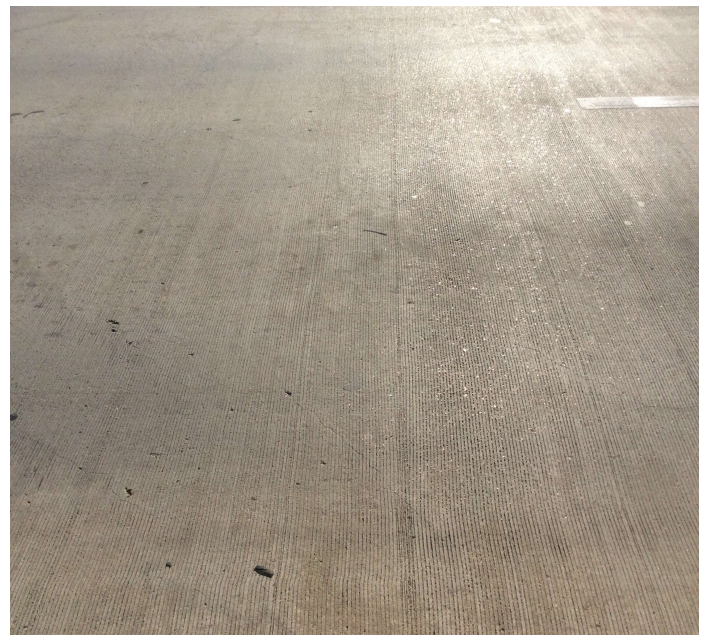


PHOTO 2 Description Typical deck cracks.